

Mallarmé

CHAMBER PLAYERS

Special Events

Weddings

Receptions

Corporate Events

Church Services

Private Concerts

About Us

The musicians of Mallarmé Chamber Players perform an innovative mix of chamber music spanning four centuries. They perform traditional chamber music but are well-known for performing music of diverse cultures, works by women and North Carolina composers. Mallarmé regularly commissions and performs new music. They engage in partnerships with other arts and community organizations to present programs that are interdisciplinary and multicultural. These programs are presented on the Sunday Afternoon Series in Durham, at school and community concerts throughout the Triangle, North Carolina and the Southeast. Mallarmé Chamber Players was founded in 1984 and is based in Durham, NC.

Artistic Director, **Suzanne Rouso**, has an extensive background as a performer and administrator in classical music. She has worked as Director of Education for the North Carolina Symphony, Personnel Manager for the Eastern Music Festival and Director of Operations and Education of the Portland (Maine) Symphony. She has been a professional violist for over 25 years, performing with many of the ensembles in the Triangle and Triad including 12 years as the principal violist of the Greensboro Symphony. Ms. Rouso attended the Curtis Institute of Music, the Eastman School and New England Conservatory and earned a bachelors and masters degree in viola performance.



REVIEWS OF THE MALLARMÉ CHAMBER PLAYERS:

The appeal of a presentation by the Mallarmé Chamber Players isn't just the superb talent of its members or intriguing combinations of instruments. Their programs highlight new pieces and exotic genres, re-introduce overlooked compositional jewels, and reexamine canonical chamber works.

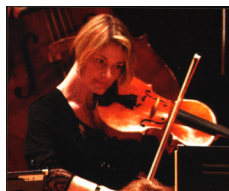
Alexandra Jones, CVNC.org

Superb musicians...very generous with their time.

Suzanne Zetterburg, Presenter, Scripps College, CA

You've got to hand it to'em when it come to innovative programming.


John W. Lambert, CVNC.org



Mallarmé Chamber Players
Durham Arts Council, 120 Morris Street
Durham, NC 27701
(919) 560-2788
office@mallarmemusic.org
www.mallarmemusic.org


Musical Selections

We can bring your dreams to reality with our professional musical ensembles custom designed especially for your personalized musical needs. Mallarmé offers music and performers of the highest quality and has 25 years of experience. Your satisfaction is guaranteed. Arrangements of popular classical music such as Wagner and Mendelssohn wedding marches, Bach's *Air on the G String*, Pachelbel's *Canon in D*, *Trumpet Voluntary* and others are available for all ensembles. Classical and Baroque repertoire for all ensembles includes works by Bach, Telemann, Vivaldi, Handel, Mozart and Haydn. Mallarmé can also customize selections to reflect customer preferences in repertoire, style (i.e. jazz, contemporary, Renaissance, etc.) and different ethnicities.



*Mallarmé Chamber
Players
120 Morris Street
Durham, NC 27701
919-560-2788*

*office@mallarmemusic.org
www.mallarmemusic.org*



Available Ensembles

SOLO PLAYER

*guitar, trumpet, piano, cello or flute, bagpipe or harp
starting at \$350*

DUO

*guitar and flute, flute with violin or cello, violin and cello, flute and harp
starting at \$550*

TRIO

*string trio (violin, viola, cello), flute, violin, cello ; harp, flute, viola
starting at \$750*

QUARTET

*flute, violin, viola, cello or string quartet
starting at \$1000*

QUINTET

*brass quintet
starting at \$1200*

other combinations of instruments are possible upon request

Fees are subject to change and may vary depending on circumstance

Fee Packages

Mallarmé Chamber Players artists are available as soloists and ensembles for concerts, weddings, receptions and other celebrations.

Wedding ceremony services include pre-ceremony, prelude, ceremony music, recessional, and postlude.

Receptions or other events include up to two hours of musicians' time for background music. Additional hours are \$75 per musician per hour.

Ask about our special pricing and cost savings when your ceremony and reception are at the same event location.

Mallarmé can provide music for funeral services upon request.

Included in fees for each event:

- * One hour face-to-face consultation with the Artistic Director concerning music and logistics.
- * Unlimited access to staff via phone and email prior to event.
- * Locations within the Triangle area; there is an additional travel fee for events outside of Durham, Raleigh or Chapel Hill.

Formal, casual or business attire available